

PM-Drain-Tec protection and drainage system in accordance with DIN 4095 and DIN 18195

PM-Drain-Tec by PMI-plast is an effective protection and drainage system for building projects at locations with high water load.

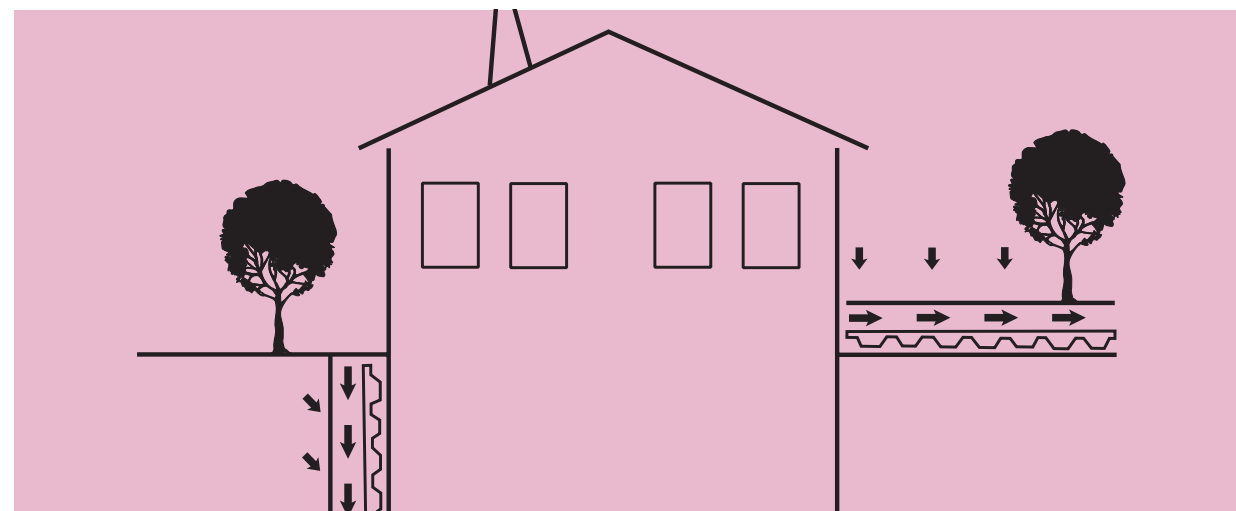
PM-Drain-Tec consists of a knobbed roll and a solid filter mat.

This 2-layer system protects the damp-proofing course against soil and root movements and provides efficient distribution of the soil pressure. PM-Drain-Tec is suitable for horizontal as well as vertical placing.

PM-Drain-Tec in vertical installation

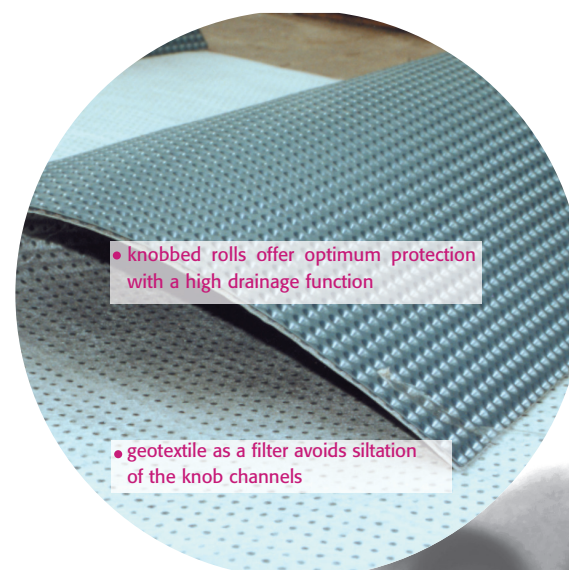
Where PM-Geo-Tec is well-tried for being used together with bituminous thick coatings, PM-Drain-Tec is particularly suitable to protect damp-proofings for higher pressure loads, such as perimeter insulating boards, rigid or flexible sealing grouts. This 2-layer system protects the damp-proofing against soil and root movements and provides efficient distribution of the soil

pressure. The knobs laid towards the soil guarantee a safe and durable drainage of ground and rain water. The mat on the knobs acts as a filter and avoids siltation of the knob channels.



PM-Drain-Tec in horizontal installation

In horizontal installation, PM-Drain-Tec provides safe and efficient protection against confined water, e.g. for earth-sheltered underground park decks, patios or greenroofs. The dampness is conveyed through the fabric into the knob channels for drainage. It is important for it that the surfaces to be drained must have a minimum inclination of 2 %.



PM-Drain-Tec offers the following advantages:

- suitable for vertical and horizontal installation
- multi-functional foundation wall protection
- high drainage efficiency and optimum water discharge through the knobbed rolls
- the polypropylene filter fabric avoids siltation of the knobs
- the drainage capacity exceeds by far the requirements of DIN 4095
- highly efficient and durable filter function of the fabric thanks to optimal pore distribution
- placing independent from atmospheric conditions; can also be processed at sub-zero temperature
- quick and easy installation; work can be carried out upright
- age-resistant by special stabilizers
- environmentally sound: the material can be completely recycled and has no toxic effects on the water table
- protective action meeting DIN 18195
- scientifically tested

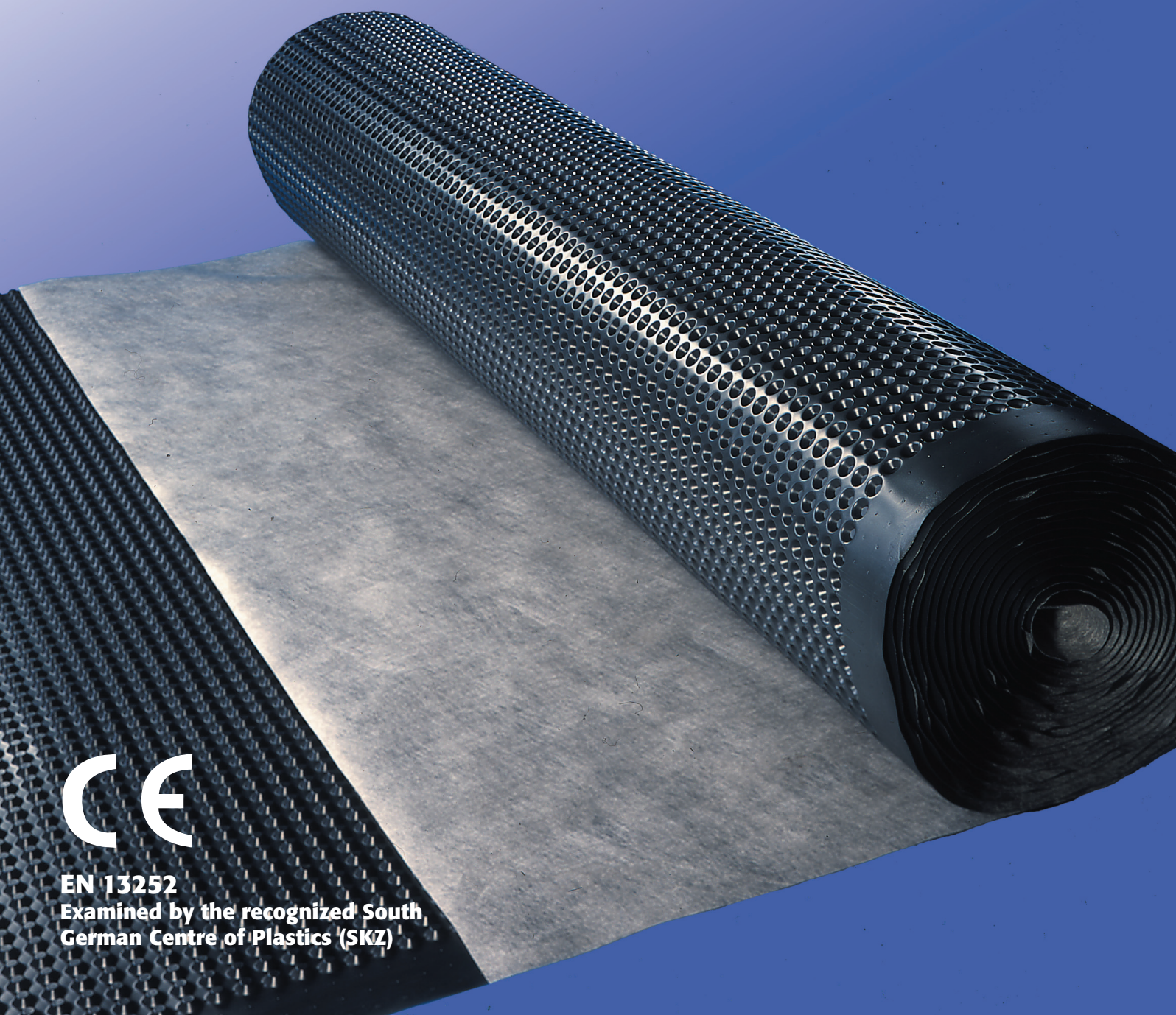
Technical specifications PM-Drain-Tec

material	HDPE approx. 550g
material	geotextile PP approx. 100g/m ²
burst pressure	250 kN/m ² = 25 t/m ²
alternativ	400 kN/m ² = 40 t/m ²
knob height	8 mm
colour	black
number of knobs	1710 knobs/m ²
air volume between the knobs	approx. 5.5 l/m ²
water drainage capacity	approx. 3.1 l/m x s
temperature range	-30° C to +80° C
roll length	15 m
roll width	2.0 m or 2.5 m
deliverable form	6 rolls on one-way pallets
chemical properties	resistant to acids and inorganic acids in the soil
biological properties	bacteria-, fungus-, rot- and root-resistant
physiological properties	not harmful to drinking water



PM-Drain-Tec

The tested multi-functional drainage system

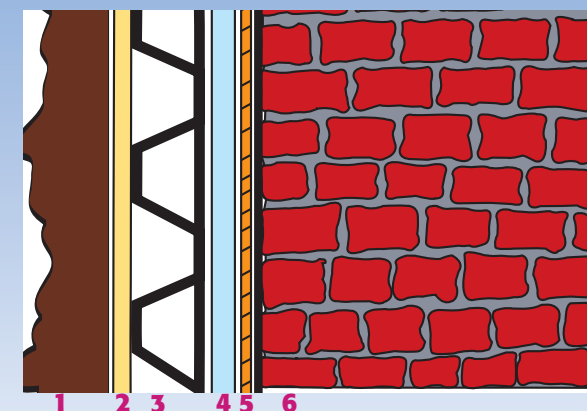


EN 13252
Examined by the recognized South
German Centre of Plastics (SKZ)

Advice on placing

Vertical

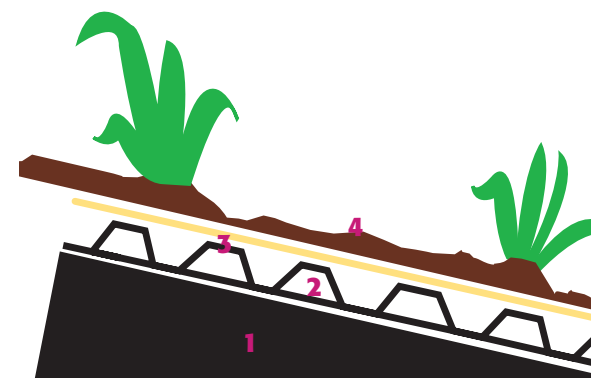
- for sealing heights up to 1.9 m, the 2 m wide roll is unrolled onto the wall
- for sealing heights of more than 1.9 m, the rolls are cut accordingly and then placed from top to bottom
- fixing of the rolls with PM assembly buttons and steel nails
- make sure that the rolls have a lateral overlap of approx. 15 cm and lift the fabric accordingly
- place the upper edge of the rolls about 15 cm above the sealing
- the last roll must have approx. 30 cm overlapping to the first roll
- the lower end rests on the annular drainage



- 1 soil
- 2 geotextile
- 3 PMI-Knobbed roll
- 4 perimeter insulation
- 5 e.g. insulation
- 6 brickwork

Horizontal

- unroll PM-Drain-Tec with the fabric showing upwards
- make sure that the rolls have an overlap of approx. 15 cm and lift the fabric accordingly
- it is important that the surfaces to be drained have a minimum inclination of 2%



- 1 surface to be drained (min. inclination 2%)
- 2 PMI-Knobbed roll
- 3 geotextile
- 4 soil

Our product range:

- Knobbed rolls in various versions with accessories
- Building accessories/roof accessories
- Stonework barriers
- Building films
- Vapour barriers
- Roof underlays
- Thermomodules



PMI-Plast GmbH • Bullermannshof 10 • Gewerbegebiet Hülsdonk-Nord • D-47441 Moers • Germany
Tel.: +49 (0)28 41 8 80 69-0 • Fax: +49 (0)28 41 8 80 69-50 • E-mail: info@pmi-plast.de • www.pmi-plast.de

PMI PM-Drain-Tec